



P R I C E L I S T

EXPLORE OUR  
CURRENT HAIR AND  
BEAUTY TREATMENTS

---

**THE LOUNGE ASHBOURNE**

5, The Gallery

Victoria Square,

Market Place

Ashbourne,

DE6 1GG

Tel: **01335 344588**

email: **[theloungeashbourne.co.uk](mailto:theloungeashbourne.co.uk)**





## H A I R   S T Y L I N G

The Hair Lounge provides a unique personalized styling service using L.Oreal professional, KEVIN MURPHY and Olaplex.



## O U R   C U T T I N G   &   S T Y L I N G   P R I C E L I S T

[theloungeashbourne.co.uk](http://theloungeashbourne.co.uk)





Skincare for your hair,

Born from the same philosophy as skincare,  
KEVIN.MURPHY products are weightlessly designed  
to deliver performance, strength and longevity.



We believe in being at the head of both trends and  
technology. You'll find our products backstage at the  
biggest fashion week shows and in the hands of the top  
stylists, to raise the profile of the hairdressing industry.  
Everyone's hair is different and our extensive range of  
hair care, styling and colour products will help meet  
your individual needs.





## **LADIES**

Wash Cut + Finish Short  
Wash Cut + Finish Long

From £30 - £45  
From £45- £60

Restyle  
Dry Cut

From £50 - £60  
From £30 - £40

## **GENTS**

Wash, Cut + Finish  
Dry Cut

From £25 - £35  
From £15 - £25

## **BLOWDRY/STYLING**

Post Colour /Classic  
Blowout

From £25-£35  
From £35 - £45

## **Children**

Baby / Toddler  
5-10 Years cut Only  
5-10 Years Wash, Cut + Blow  
11-16 Years wash, Cut + Finish

From £10  
From £15  
From £25-35  
From £30-£45





### **Colour**

|                   |          |
|-------------------|----------|
| Short foils       | From £45 |
| Medium foils      | From £50 |
| Long foils        | From £60 |
| Partial/scattered | From £40 |

### **Tints + Tones**

|                  |                 |
|------------------|-----------------|
| Full Head Colour | From £60        |
| Retouch          | From £45        |
| Semi Gloss       | From £50        |
| Colour Corection | on-consultation |

### **Upgrades**

|              |          |
|--------------|----------|
| Shine & Tone | From £20 |
| Treatment    | From £10 |
| Olaplex      | From £20 |

\*Skin test required 48hrs prior to colour service.





H a i r   E x t e n s i o n s



# SWAY



SWAY

HAIR EXTENSIONS

GET YOUR PERFECT LENGTH NOW

14" TAPES

16" FLAT WEFT, NANOS, & TAPES

18" ALL METHODS

20" FLAT WEFT, NANOS, & TAPES

22" ALL METHODS

24" FLAT WEFT, NANOS, & TAPES

SWAY is now one of the UK's leading salon professional brands and rated No1 on Trustpilot. A salon professional go to brand offering 5 hair extension methods, 41 unique natural colour shades. A one stop shop for stylist needs, they have the opportunity to create the most discreet colour blends and lengths in the market.

Our vision is to become the leading sustainable hair extensions brand in the UK. It's essential we lead by example, and that is why in May 2020 we announced our 'ONE 4 ONE' GLOBAL PARTNERSHIP with ONE TREE PLANTED.



# SHOWPONY

## PREMIUM SLIMLINE TAPES

The creative collection, this innovative design features slimline and non-bulky Tape Hair Extensions, blends flawlessly with natural hair.

- ✓ Hair Blend: 80% Indian + 20% European human hair
- ✓ The finest cuticle Remy A+ human hair
- ✓ 25 colours in 20" + 14 colours in 14" and 24"
- ✓ Suitable for fine to thick hair
- ✓ Partial application, non-committal colour, highlights, volume and length
- ✓ Reusable, slimline, undetectable





# BEAUTY WORKS

Beauty Works Professional Hair Extensions are salon professional hair extension methods that allow clients to achieve long-lasting results. Our luxury hair solutions are made from 100% Cuticle Remy human hair & are available in a range of fast, effective and damage-free methods.



- Trusted clip-in & semi-permanent hair extensions supplier since 2009
- Ethically sourced & regulated hair, sustainably packaged
- Extensive collection of ranges in lengths 14"-26" & 40+ bespoke shades
- Multi-award winning hair extensions, styling tools & haircare
- Partnered with over 4000 salons worldwide
- Cult following from celebrities and beauty gurus worldwide



## Hair Extensions

Every clients needs are different, whether that be volume, length or zero commitment colour.

Extensions require an In-depth and personal consultation and colour match.





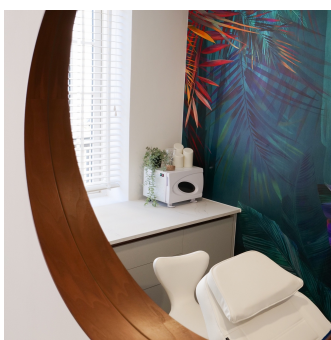


UNPLUG FROM THE STRESS OF  
DAILY LIFE IN OUR BEAUTIFUL  
BOUTIQUE SALON.





# BEAUTY AT THE LOUNGE





Introduce your mind, body and soul to our advanced range of salon treatments.

Our qualified professional team offer their individual expertise ensuring your perfect lounge experience.

We offer an extensive range of advanced salon treatments such as CLARINS, CACI, Crystal Clear, DERMALUX LED, HD Brows/Lashes and COMCIT ELITE facials. Alongside our luxury beauty essentials, Lycon waxing, Luxe SPA manicures and pedicures, ST Tropez tanning, Aesthetics and much more.



# CLARINS

CLARINS a perfect harmony of nature and science. The expert beauty botanists deliver treatments to make you look and feel good. No matter your age, gender or skin type, our plant enriched formulas, aromatic enriched essential oils and personalised massage movements, mean that your skin will always be in the best hands. Our treatments aren't just designed to be relaxing, sensorial experiences, they're also designed to work. To deliver long lasting and proven results for your skin. At the heart of each treatment is a 25 minute massage. Our microcirculation and drainage techniques are what makes them so effective – helping to smooth and shape your skin, giving you that extra bit of sparkle.



## CLARINS SKIN EXPERT FACIALS

### YOUTH EXPERT

If you'd like your skin to feel a little firmer or look more radiant, this is the facial for you. Whether it's hormonal changes, pollution, stress or any other cause, after a thorough skin diagnosis, your therapist will tailor the treatment to your specific concerns and skin type. Leaving you firm and glowing.

70minutes £80

### POWER HYDRATOR

Like a long drink for the skin, this feel-good treatment pampers dry, fragile skin types - relieving tightness, plumping out fine lines and restoring comfort, softness and radiance.

70minutes £80

### ANTI-BLEMISH RESCUE

This detoxifying, purifying treatment is perfect for oily or combination skin types. Impurities will be gently removed; shine will be reduced and pores will appear tightened. Leave with clear, refreshed and rebalanced skin.

70minutes £80

### RADIANCE BOOSTER

This glowing treatment will hit refresh on tired, lackluster skin, delivering a double shot of radiance and hydration. Microcirculation boosting massage and targeted products will work to create deliciously plump, luminous skin.

70 minutes £80

## SKIN SOOTHER

Calm and soothe sensitive skin with this highly effective, nurturing treatment. You'll feel immediate comfort and see a reduction in redness and irritation. Your skin will be left strengthened and radiant.

70minutes £80

## THE LOUNGE DISCOVERY FACIAL

Immerse into deep relaxation as our expert facialists create a facial designed to nourish, replenish + restore well-being.

60minutes £65

## DETOX & GLOW

This treatment will remove all the bad impurities and replace with lovely goodness. Designed with plant extracts to promote radiance and hydration, with anti-pollution properties that'll help protect the skin from the harmful effects of both indoor and outdoor pollution. Your recipe for healthy-looking skin starts here.

30minutes £40

### MAXIMISE THE RESULTS OF YOUR TREATMENT BY ADDING A SKIN BOOSTING ADD ON

- 🌿 Back Massage
  - 🌿 Hand & Foot Massage
  - 🌿 Scalp, Neck & Décolleté Massage
- 20 mins £25





THE  
LOUNGE  
ASHBOURNE



BODY TREATMENTS



## Aromatherapy Back, Neck & Shoulder Massage

Back Massage 30 minutes £40

## Cleansing & Purifying Back Treatment

A facial for your back. To decongest and rebalance transforming your skin to super smooth and velvety to touch.

40 minutes £50

## Aromatherapy Body Massage

Melt away tension and ease stress with this beautiful massage, using warm balm expertly blended to renew energy leaving skin smooth.

60 minutes £65

90 minutes £90

## Deep Tissue Energising Massage

Banish tight muscles and alleviate stress levels within the body. Powerful, deep and strong rhythmic movements make this customised massage pure therapy. Created to release discomfort of aching muscles

Back Massage 30 minutes £40

Full Body Massage 60 minutes £65

Body Brushing £15





## Aromatherapy Hot Stones Massage Therapy

A pure journey of your senses, hot stones is the perfect treatment to lose yourself into total relaxation. Heat from the volcanic stone transfers deep into the muscle to relax and ease away tension and stress. Warm aromatic balm is used to flow over the body which will create a feeling of tranquillity.

|                              |     |
|------------------------------|-----|
| Back Massage 30 minutes      | £40 |
| Full Body Massage 75 minutes | £75 |

## Lemon & Mango Firm & Tone

This collagen-boosting body treatment tones slackened skin, targets sun damaged skin and reduces the appearance of stretch marks and cellulite. Deeply nourishing and sculpting to firm and tone your target areas.

|            |     |
|------------|-----|
| 60 minutes | £60 |
|------------|-----|

## Total Aromatherapy Escape

Developed to improve wellbeing, this top-to-toe treatment includes a full body massage and facial, tailored to your skin and body needs. Indulgent botanicals actively help reduce tension and stress, leaving your skin satin smooth and with luminosity.

|            |     |
|------------|-----|
| 90 minutes | £85 |
|------------|-----|

THE  
LOUNGE  
ASHBOURNE



MOTHER TO BE





We know it's so important to look after yourself as an expectant mother - and how you feel affects your baby, so relax and recharge with our expert tailored treatments.

### **Baby On Board Face & Body Treatment**

Brightening and relaxing top-to-toe face and body treatment. This blissful treatment includes a relaxing massage to relieve fatigue, draining massage to reduce water retention to lighten 'heavy' legs and a skin brightening facial.

90 minutes

£90

### **Pregnancy Back Massage**

A nurturing treatment for a deeper level of relaxation.

30 minutes

£40

## CACI TREATMENTS



---

### Add on's to any CACI treatment

|                            |          |
|----------------------------|----------|
| Dermalux LED light therapy | From £20 |
| Glycolic Peel              | £20      |
| Ultrasonic Cleansing Peel  | £20      |

## CACI TREATMENTS

The ultimate aesthetic treatment system, combining microcurrent facial toning, skin exfoliation technology and LED skin rejuvenation enabling you to achieve beautiful skin without surgery.

### CACI SIGNATURE NON-SURGICAL FACIAL TONING

The non surgical face lift, firms your face and gives your skin a more youthful appearance and glow

60 minutes £62  
course of 10 recommended  
monthly maintenance recommended

### CACI ULTIMATE REJUVENATION

Give your skin the ultimate exfoliation for a brighter, smoother complexion. Microdermabrasion and LED light therapy is used to help achieve clearer skin. CACI's unique Wrinkle Comb, a non-invasive alternative to Botox and fillers is used to target fine lines and wrinkles to reduce and plump.

45 minuets £52  
course of 10 recommended  
monthly maintenance recommended

### CACI ULTIMATE NON-SURGICAL FACIAL TONING

This facial combines the CACI signature non-surgical facial toning with CACI Ultimate rejuvenation treatment. To complete we use the Hydro mask to deliver a surge of intense hydration to your skin.

80 minutes £85  
course of 10 recommended  
Maintenance recommended every 4/6 weeks





### **CACI SKIN CALM**

Targets skin prone to breakouts and irritation. This treatment uses LED light therapy that is anti-bacterial, anti-inflammatory and healing.

20 minutes    £30

### **EXPRESS CACI TREATMENT**

### **CACI WRINKLE REVOLUTION**

This treatment is a non-invasive, needle free alternative to collagen injections and dermal fillers that will instantly plump fine lines and wrinkles from the very first treatment.

20 minutes    £25

Course of 10 recommended

### **CACI HYDRATE**

This treatment is designed to deeply nourish, hydrate and firm the skin. Also ideal for dehydrated or sun damaged skin.

15 minutes    £25

Express treatments can be performed as either a stand alone or as an add on to any of our other CACI treatments.

## CACI ADVANCED TREATMENTS

### CACI EYE REVIVE

This treatment is all about the eyes, it lifts and firms the muscles around your eye area. A soothing Eye Revive mask is used to reduce dark circles and puffiness.

30 minutes £40  
Course of 10 recommended

### CACI JOWL LIFT

Targets muscle laxity around the jawline using CACI microcurrent. This treatment will lift and firm the muscles and redefine facial contours

30 minutes £40  
course of 10 recommended  
Maintenance recommended every  
4 / 6 weeks.

### CACI ELECTRO CELLULITE MASSAGE

This treatment gives an instant lift, shape and tone to your thighs and buttocks area. It will improve the appearance of cellulite and break down fatty deposits. The perfect treatment for a pre-holiday body blitz.

40 minutes £45  
Course of 10 recommended  
maintenance recommended

Advanced treatments can be performed as either a stand alone or as an add on to any of our other CACI treatments.



CACI NEW TREATMENTS

[theloungeashbourne.co.uk](http://theloungeashbourne.co.uk)



## CACI MICRO TOUCH FACIAL

This hands on facial is a relaxing alternative to the CACI Non- Surgical facelift facial with the microcurrent technology for targeted facial contouring, the treatment focuses on muscle lift, tension release, and deep tissue relaxation for more sculpted, toned enhanced facial definition. Using the Electro Gloves to perform treatment also provides me with greater sensory awareness of the client's facial contours and the ability to adapt my fingertip pressure when gripping the facial muscles.

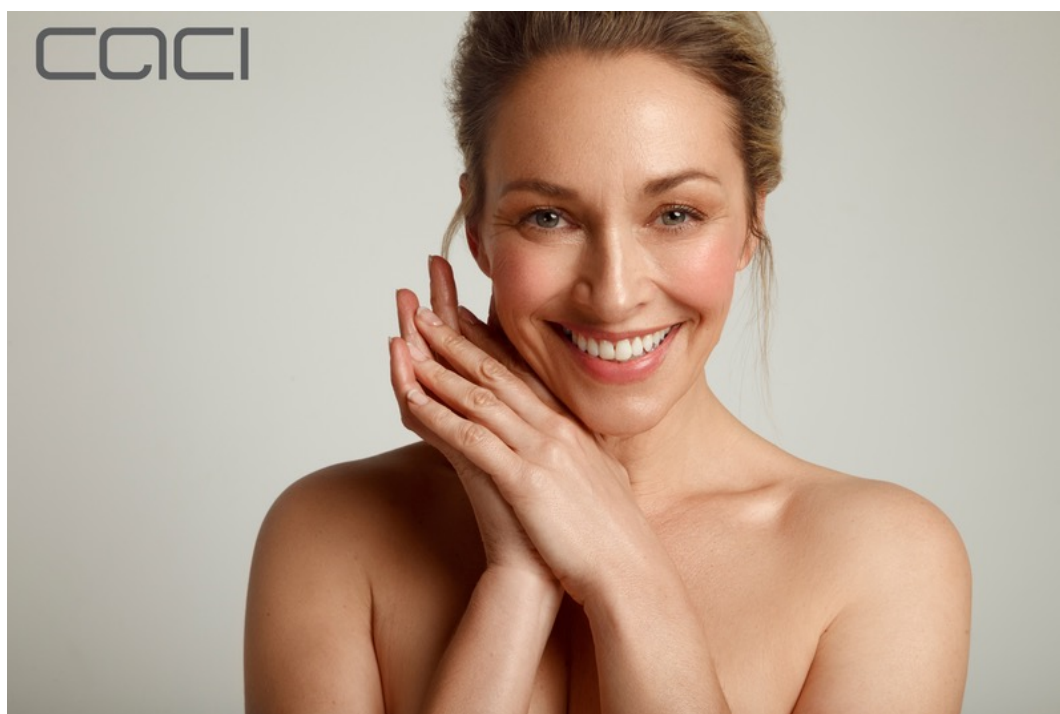
50 minutes £60

## CACI hand rejuvenation treatment

CACI's Rejuvenation Hand Mask is an intensive skin conditioning glove that is applied to the hands to hydrate and nourish the skin. Electro Gloves (made from a special electrically conductive material) are then fitted over the Rejuvenating Hand Mask and when activated with the CACI system deliver tiny electrical impulses that help to improve skin firmness and boost circulation.

30 minutes £40

Course of 10 recommended





## CRYSTAL CLEAR SKINCARE

[theloungeashbourne.co.uk](http://theloungeashbourne.co.uk)



**CRYSTAL CLEAR SKINCARE**

Achieve flawless skin with these advanced treatments. Microdermabrasion can be used to solve a wide range of skin conditions. Rejuvenating, smoothing lines and wrinkles, brightening dull dehydrated skin and tackles blackheads and pores. Very effective for reducing acne scarring and pigmentation caused by sun damage.

**CRYSTAL CLEAR MICRODERMABRASION TREATMENT**

This clinically proven treatment treats fine lines and wrinkles, blackheads and skin prone breakouts, open pores, sun damaged skin and dull skin. Achieve smoother, more radiant skin.

|                                   |      |
|-----------------------------------|------|
| 45 minutes                        | £48  |
| course of 10 (recommended weekly) | £480 |
| monthly maintenance recommended   |      |

**CRYSTAL CLEAR DELUXE MICRODERMABRASION TREATMENT**

Ultimate skin rejuvenation. A deep cleanse and tone followed by our full microdermabrasion treatment to target any skin issues, oxygen therapy is then used to infuse the skin ending with the famous mini lift mask to give that extra moisture hit.

|                                   |      |
|-----------------------------------|------|
| 60 minutes                        | £65  |
| course of 10 (recommended weekly) | £650 |
| monthly maintenance recommended   |      |



## CRYSTAL CLEAR COMCIT ELITE™

Cryo Oxygen Micro-channelling Collagen Induction Therapy. A cutting edge treatment that promotes Collagen through a series of technologies. The results are outstanding, skin is firmer, lines and wrinkles are plumped out. COMCIT is also advanced in treating acne and pigmentation.

### COMCIT ELITE™ CRYSTAL CLEAR H2O GLOW

The 'Red Carpet Facial' delivers freezing oxygen throughout the epidermis to nourish and invigorate skin cells, while the COMCIT micro-channelling action allows Hyaluronic Acid to reach deeper to dermal layers via microchannels; plumping and rebalancing the skin from the inside out.

60 minutes £80

### COMCIT ELITE™ CRYSTAL CLEAR H2O GLOW DELUXE

The deluxe treatment includes Crystal Clear Beauty Flash microdermabrasion to the face and neck. Results are brighter, fresher, hydrated skin that glows with youthful radiance.

75 minutes £95

### COMCIT ELITE™ FROZEN FACIAL

This revolutionary anti-aging treatment is the first of its kind, delivering an infusion of Hyaluronic Acid serum that is packed with plant stem cells to the dermal layer of your skin, it stimulates new collagen production and significantly reduces lines and wrinkles and rejuvenates skin texture and firmness.

60 minutes £95

### COMCIT ELITE™ ACNE TARGETING

This proactive treatment stimulates the synthesis of the epidermal cells, reducing redness and inflammation, and allowing skin to take on a whole new radiance.

60 minutes £95



**COMCIT ELITE™ CLEAR AND BRIGHT**

This pigmentation diminishing facial uses powerful brightening and lightening actives to tackle pigmentation and uneven skin tone. The infusion is packed with a unique and powerful active lightening ingredient (Neurolighta) proven to help rebalance uneven skin tone.

|  |            |     |
|--|------------|-----|
|  | 60 minutes | £95 |
| Add on's                                     |            |     |
| Crystal Clear Beauty Flash Microdermabrasion |            | £15 |
| Dermalux LED light therapy                   |            | £20 |
| Glycolic Peel                                |            | £20 |

**COMCIT ELITE™ OXYGEN THERAPY**

Oxygen Therapy offers an immediate anti-fatigue effect, using and action-packed serum with cell energising extracts to plump and invigorate the skin. Skin is buffed and polished and left visibly radiant and hydrated.

|  |            |     |
|--|------------|-----|
|  | 60 minutes | £65 |
|--|------------|-----|

**COMCIT ELITE™ DELUXE OXYGEN THERAPY**

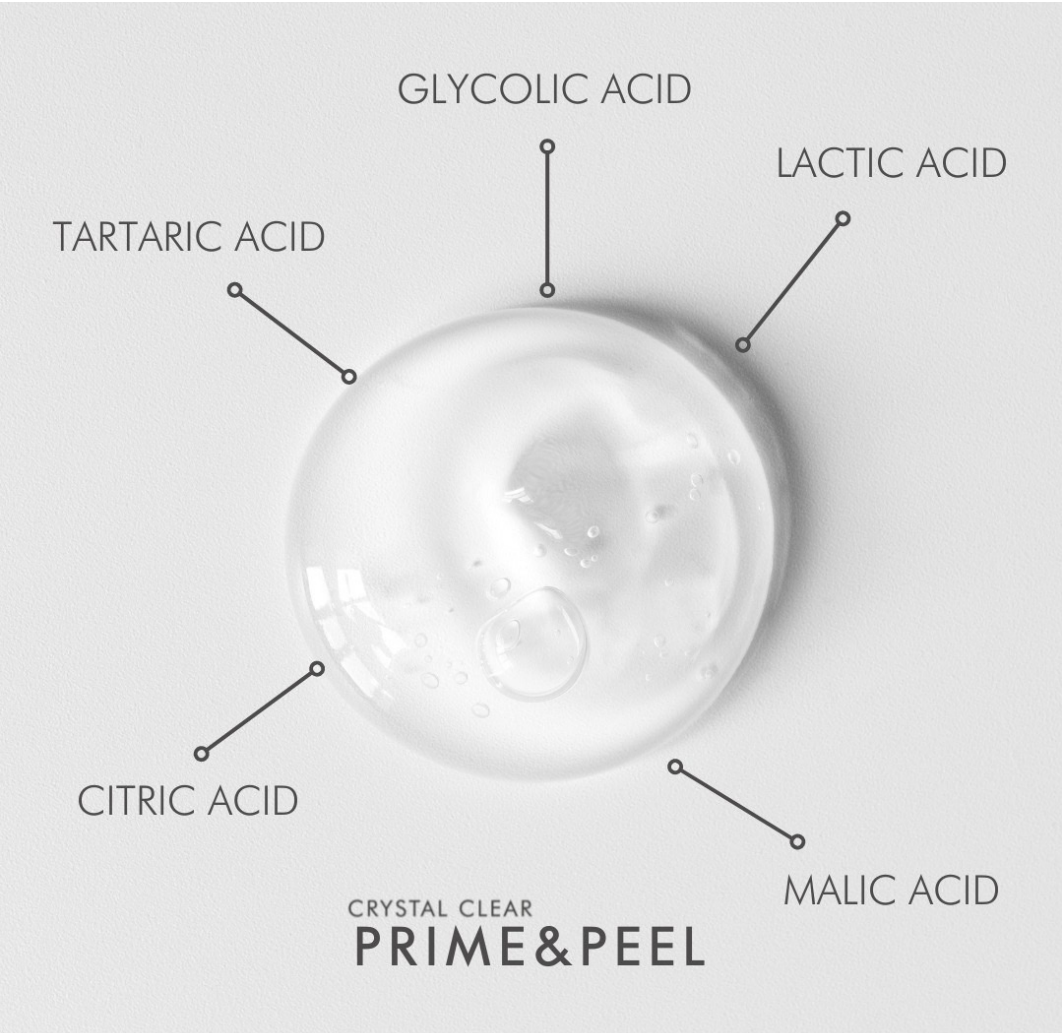
|  |            |     |
|--|------------|-----|
| Includes Crystal Clear beauty flash Microdermabrasion. |            |     |
|  | 75 minutes | £80 |

We recommend a course of 6 treatments, one every 2 weeks and maintenance thereafter.

# PRIME AND PEEL

Prime and Peel is Crystal Clear's brand-new multi-layering peeling system. This non-invasive yet miracle treatment can be incorporated with your existing Crystal-Clear skin or CACI systems or performed as a stand-alone luxury facial treatment. Prime and Peel is Crystal Clear's brand-new multi-layering peeling system.

|                     |        |     |
|---------------------|--------|-----|
| Express treatment   | 20mins | £30 |
| Deluxe Prime & Peel | 50mins | £60 |
| Add on treatment    | 10mins | £20 |





## HERBS2PEEL SKIN TREATMENTS

Herbs2Peel Skin Treatments are easily the most natural, organic professional skincare treatment for strong regeneration and correction. The peels are offered worldwide by certified skincare professionals as a reliable solution for various skin conditions and problems. This method has been further developed and perfected for over three generations.

There's far more to the Alex Peels than just your conventional herbal peel treatment. It is the modern, natural and a safe alternative to other skincare treatment methods (such as needling and microdermabrasion) and other established peels (chemical peels, fruit acids.) and can be customized to your skin type and condition due to the variety of treatment options. This makes an Alex Peel the progressive choice for every skin type, virtually every skin need and every season.



# HERBS2PEEL SKIN TREATMENTS

**The Beauty Peel** is a simple and easily performed beauty treatment with instant visible results. It's the natural alternative to conventional facial treatment methods and provides skin with more radiance and glow - even after the very first treatment.

**The Beauty Peel** has the advantages of the classic herbal peel treatment, without signs of visible peeling. An ideal fresh-kick before special events with customized treatments as a strengthening and repair after summer, a detox treatment or as an exclusive pampering treatment.

**B - peel** facial £75

## THE GOAL: A NEW SKIN IN 5 DAYS

The **Corrective Peel** (also known as the herbal peel treatment or the '**C' peel**) is the natural problem solver for a variety of skin problems - impure skin, breakouts, scars, severely sun damaged skin / atrophy & elastosis, several forms of hyperpigmentation, cellulite, ageing, acne. It results in peeling the upper layers of the skin while simultaneously regenerating it in just 5 days.

The **Corrective Peel** is a professional treatment carried out in the clinic by a certified skincare specialist after conducting a thorough skin analysis. After the treatment the client is required to use the specifically formulated Alex Cosmetic home care products within the 5-day period in order to optimally support the skin during the peel process. In general, the skin begins to visibly peel on the 3rd day after treatment.

Every skin reacts individually to the herbal peeling treatment, but on average it takes a total of 5 days to peel completely and to reveal the new skin. This is also the time where the follow-up treatment is conducted, since the skin now is especially receptive

|                       |         |
|-----------------------|---------|
| <b>C-Peel</b> package | £180.00 |
| -C-peel facial        |         |
| -Follow up treatment  |         |
| -Home product kit     |         |

## DERMALUX LED LIGHT THERAPY

---

Dermalux Flex MD is a non-invasive Treatment that delivers clinically proven therapeutic light energy for rejuvenating and Corrective benefits. Specific wavelengths are absorbed by the skin to stimulate cell renewal and collagen production, resolve problem skin conditions such as acne and redness and accelerate skin healing. It is a safe and pain free treatment without downtime.



Treatment time 30 mins

£42

Courses of 12 recommended  
Add into a combination facial £20

**Dermaplaning Express** - 30 mins

£45

**Dermaplaning Deluxe** – 60 mins

£65

Dermaplaning is an exfoliation treatment that uses a medical grade blade to remove the top layer of dead skin cells and fine vellus hair (peach fuzz). This stimulates new skin cell development leaving your skin with a more youthful , glowing complexion.

Our tailored Dermaplaning Deluxe facial includes super charged skin shot serums and a detox face massage and mask to target acne , ageing and glow.



## Skin Pen

Skin pen is the first FDA-cleared micro-needling device in the world. Clinically proven to safely and effectively fight the appearance of wrinkles, acne scars, pigmentation, open pores for ages 22+

With as little as three non-invasive and affordable treatments spaced 30 days apart, you can improve your appearance of your skin and step out in confidence.

Skin pen creates hundreds to thousands of micro skin punctures per second to stimulate the skins natural wound healing response to promote tissue remodelling without causing scar tissue formation. Most patients can return to normal activities within 24 hours.

SKINPEN From £200 (Includes full face)  
Course of 4 £750 (area depending)



## Cryopen

Cryopen treats skin imperfections including –

- AGE SPOTS
- SKIN TAGS REMOVAL
- CHERRY ANGIOMA REMOVAL
- WART REMOVAL

It is also considered as best verruca removal and milia removal.

Cryopen treatment uses a specialised device with nitrous oxide to destroy the underlying tissue as a result the blemish will disappear after some time.

Little downtime, minimal pain, quick treatment time, no patch test, quick results.

Prices start at £50 (Consultation required)





## HANDS & FEET PRICELIST



The Lounge Luxe Manicure and Pedicure treatments using professional salon skincare line that brings the quality and efficiency of facial skincare to premium products developed specifically for hands and feet.

|  |         |        |
|--|---------|--------|
| <b>Express Manicure Cuticle, File + Polish</b> | £25     | 30 min |
| <b>Lounge Spa Manicure</b>                     | £40     | 60 min |
| <b>Lounge spa Luxe Manicure including mask</b> | £47     | 75 min |
| <b>Lounge Spa Pedicure</b>                     | £48     | 60min  |
| <b>Lounge Luxe Pedicure including mask</b>     | £56     | 75 min |
| <b>Callus &amp; Heel Peel Foot Therapy</b>     | £45     | 45 min |
| <b>Add gel polish</b>                          | £15     |        |
| <b>Nail Art / Chrome / French Finish</b>       | From £2 |        |





## GEL POLISH TREATMENTS



Gel colour is ideal for clients looking for a quick service that offers performance with up to 3 weeks of shine-intense wear and stay true colour.

|  |     |        |
|--|-----|--------|
| <b>Gel polish fingers including cuticle tidy</b> | £32 | 60min  |
| <b>Gel polish toes including cuticle tidy</b>    | £32 | 60min  |
| <b>Gel polish removal and reapply</b>            | £34 | 90min  |
| <b>Gel polish removal and tidy</b>               | £25 | 30min  |
| <b>BIAB</b>                                      | £36 | 60min  |
| <b>BIAB Removal + Reapply</b>                    | £38 | 90 min |

**Please note**  
 An additional charge of £10 on removal of gel which has not be applied at The Lounge.



# THE LOUNGE

ASHBOURNE



HAIR REMOVAL





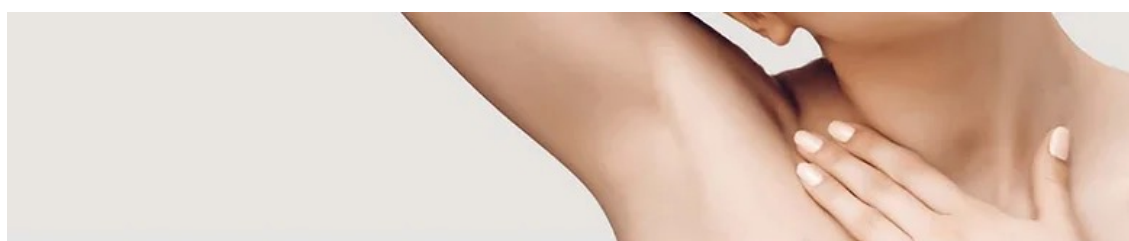
|   |          |        |
|---|----------|--------|
| <b>Eyebrows</b>                             | £15      | 30min  |
| <b>Lip or Chin</b>                          | £12      | 30min  |
| <b>Lip &amp; Chin</b>                       | £20      | 30min  |
| <b>Eyebrows &amp; Lip</b>                   | £26      | 30min  |
| <b>Side of face</b>                         | £15      | 30min  |
| <b>Nasel or Ears</b>                        | £10      | 30min  |
| <b>Forearm</b>                              | £20      | 30min  |
| <b>Full arm</b>                             | £30      | 30min  |
| <b>Underarm</b>                             | £15      | 30 min |
| <b>Half leg wax including back of thigh</b> | £26      | 30min  |
| <b>Full leg wax</b>                         | £36      | 30min  |
| <b>Full leg &amp; bikini</b>                | £48      | 30min  |
| <b>Threading (excluding eyebrows)</b>       | From £10 | 30min  |

I n t i m a t e   P r e c i s i o n   H o t  
W a x i n g



LYCON Hot Wax is an Australian premium wax made from the finest resins, Natural ingredients and aromatherapy oils. The benefits from LYCON speak for themselves, Virtually pain free hair removal of hairs as short as 1mm with long lasting results.

|                  |     |
|------------------|-----|
| <b>Bikini</b>    | £18 |
| <b>G-string</b>  | £24 |
| <b>Brazilian</b> | £35 |
| <b>Hollywood</b> | £40 |



# **EPILOSEICE** **PLATINUM**

A BREAKTHROUGH IN ICE LASER HAIR REMOVAL



**E p i L a s e I c e P l a t i n u m**





Laser Hair  
Removal  
for ALL SKIN  
types

**The complete solution for laser hair removal, suitable for all skin types, including tanned skin. Offers the synergistic benefits of the 3 most effective wavelengths for hair removal, targeting different structures within the hair follicle.**

-Temperatures are kept constantly at -5c, ensuring a comfortable treatment.

-Epilase Ice Platinum laser hair removal offers a permanent reduction of up to 90%.

-Any hair that does grow back will be thinner, lighter and softer, with the additional benefit of smoother skin.

-Save time and money, invest in a course of laser hair removal and you may never have to wax or shave again-saving time and money in the long run.

-Improve skin tone and texture. Say goodbye to pigmentation and uneven skin left behind after constant shaving or waxing.

**Virtually Painless** -Treatment is virtually painless thanks to it's unique -5 cooling system.

**Speed** - Treatment sessions are super quick, even for large areas such as the legs or back.

**No Downtime** - Return to normal activities immediately after.

**Tanned skin** - Treatments can be performed any time of the year including on tanned skin.

EpiLaseIce Platinum  
Price list



|              |      |                   |      |
|--------------|------|-------------------|------|
| Upper Lip    | £50  | Half Arm          | £80  |
| Chin         | £50  | Full Arm          | £100 |
| Lip & Chin   | £70  | Hands             | £50  |
| Brow         | £35  | Areola            | £40  |
| Half face    | £70  | Naval Line        | £60  |
| Full face    | £110 | Bikini            | £70  |
| Neck         | £80  | Brazilian         | £90  |
| Lower Back   | £90  | Hollywood         | £110 |
| Back         | £180 | Full Leg          | £175 |
| Chest        | £100 | Lower Leg         | £120 |
| Back & Chest | £250 | Buttocks          | £80  |
| Abdomen      | £80  | Back of thighs    | £90  |
| Chest & Abs  | £150 | Bikini & thighs   | £180 |
| Underarm     | £70  | Full leg & bikini | £240 |
| Shoulders    | £80  |                   |      |



L A S H E S   &   B R O W S

## LASH AND BROWS PRICELIST

[theloungeashbourne.co.uk](http://theloungeashbourne.co.uk)





**LASH AND BROWS**

|  |         |        |     |
|--|---------|--------|-----|
| <b>Eyebrow tint</b>                            |         |        | £14 |
| <b>Eyebrow Shape</b>                           |         |        | £15 |
| <b>Eyebrow Shape &amp; tint</b>                |         |        | £24 |
| <b>Eyelash tint</b>                            |         |        | £22 |
| <b>Eyebrow shape &amp; Eyelash tint</b>        |         |        | £32 |
| <b>Eyebrow shape &amp; tint + Eyelash tint</b> |         |        | £38 |
| <b>LVL Lash Lift</b>                           |         |        | £48 |
| <b>Party Lashes</b>                            |         | From - | £25 |
| <b>Lash Extensions From</b>                    |         |        | £50 |
| <b>Classic Lash extensions</b>                 |         |        | £50 |
| <b>Hybrid Lash extensions</b>                  |         |        | £55 |
| <b>Volume Lash extensions</b>                  |         |        | £65 |
| <b>Lash Extension infills</b>                  | 3 Weeks |        | £38 |
|  | 4 Weeks |        | £40 |
| <b>Lash Removal</b>                            |         |        | £15 |

**Please note all tinting and eyelash extensions require a patch test 48 hours before your treatment.**

HD BROWS





### **HD Brows - £35**

HD Brows is a 7-step procedure which includes threading, waxing, tweezing and tinting to create the ultimate defined brows. Each treatment is designed to enhance your overall face shape, creating a truly tailored service. The treatment is finished with application of HD brows make up, if required to give you a polished look. This treatment takes up to 40 minutes and depending how fast hair grows can last up to 6 weeks.

### **HD Brow Sculpt - £45\***

The HD brow takes on brow lamination. The most common use for brow lamination is to create a brushed up brow look. However, this technique can be used for so much more than that, brow hair can be set in any desired position (not just brushed up) to instantly correct asymmetrical or unruly brows. When combined with HD Brows treatments it can totally transform the overall shape of the brows



# THE LOUNGE

ASHBOURNE



TANNING



## TANNING

*A ST TROPEZ TANNING TREATMENT GIVES YOU A FLAWLESS TAN.*

You can choose from our professional salon mist or lotion. Salon professional mist available in Classic and Express which develops in 1-3 hours.

|  |     |
|--|-----|
| <b>Full Body exfoliation &amp; Spray tan</b> | £45 |
| <b>ST Tropez Full Body Spray Tan</b>         | £30 |
| <b>ST Tropez Half Body Spray Tan</b>         | £22 |

### TANNING TIPS

- We recommend a patch test 24 hours prior to your tan.
- Exfoliate prior to tanning, pay special attention to dry areas such as hands, Knees, Ankles & feet.
- Avoid deodorant and moisturizer on the day.
- Wax or shave at least 24 hours prior to your tan.
- Wear loose, dark clothing on the day of your tan.



CLARINS **MEN**

MENS TREATMENTS



## MENS TREATMENTS

|                      |     |
|----------------------|-----|
| Lounge mens Manicure | £35 |
| Lounge mens Pedicure | £45 |

## MENS WAXING

|                                 |     |
|---------------------------------|-----|
| Eyebrows                        | £15 |
| Nasal or Ears                   | £10 |
| Back Wax (Including shoulders)  | £34 |
| Chest Wax (Including shoulders) | £34 |

## Massage

|                   |                |
|-------------------|----------------|
| Back massage      | £40 30 minutes |
| Full Body Massage | £65 60 minutes |

## CLARINS DETOX & REVITALISE FACIAL

This treatment will remove all the bad impurities and revitalise you skin. Designed with plant extracts to promote radiance and hydration, with anti-pollution properties that'll help protect the skin from the harmful effects of both indoor and outdoor pollution. Your recipe for healthy-looking skin starts here.

£40 30min

## CLARINS EXPERT FACIAL

CLARINS intensive expert facials target a deeper relaxation and target skin detox, purification, hydration and soothe. Men have thicker, firmer skin and the aggression of daily shaving means a greater need to combat dehydration and the anti-ageing process. Our men's Clarins Facial targets it all.

£80 70min

### MAXIMISE THE RESULTS OF YOUR TREATMENT BY ADDING A SKIN BOOSTER

-  Back Massage
-  Hand & Foot Massage Scalp
-  Neck & Décolleté Massage

20 mins £20



## **Bridal hair & make up**

We inspire and create for your  
perfect day.



Please contact us for more  
information. Or to book our  
bespoke bridal services.



## Little Miss Parties



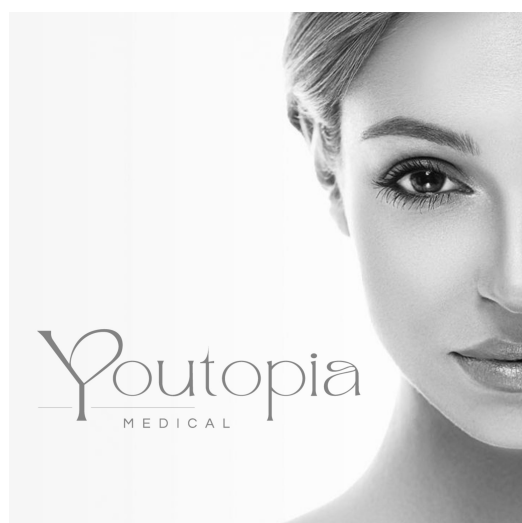
Get in touch to discuss your bespoke  
little miss party package.





Youtopia Aesthetics offer non-surgical aesthetics treatments which are natural but noticeable. but noticeable to yourself with safety, latest advanced techniques.

07553238581



## Our other clinics

Cosmetic tattooist  
Sarah Lowe  
Offers various permanent make up services helping you look and feel your personal best.

07929046720



Reiki gently breaks down any build-up of negative energy, greatly assists with personal growth and feelings of positivity.

07786638274



### **OUR Cancellation POLICY**

We have a 48 hour cancellation policy.

All clients who don't cancel on time for an appointment will be charged 50% of the treatment cost. Less than 24 hours notice/no show will result in a 100% charge of the appointment. Failure to pay will result in all future appointments being cancelled.

You agree to this policy upon booking your appointment.

PLEASE NOTE. Replies to automated text messages are not monitored and will not be accepted as a form of cancellation.

Thank you for your continued support.

**The Lounge Ashbourne**



**CALL THE SALON**

01335 344588

**SEND US AN EMAIL**

info@theloungashbourne.co.uk

